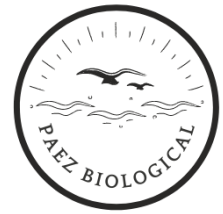


Paez Biological Consulting
1103 E Orange Grove Blvd.
Pasadena, California 91104
(626) 513-5230



Zoe Witt
Friends of the Los Angeles River
570 W. Avenue 26, Suite 250
Los Angeles, CA 90065

July 15, 2022

Re: Nesting Migratory Bird and Raptor Surveys, Compton Creek Los Angeles River Clean-up Site.

As requested by The Friends of the LA River (FoLAR), biologist Taylor Paez conducted a pre-event nesting bird survey along an approximately 1,055 ft (0.2 mi) stretch of the Los Angeles on July 15, 2022. The goal of the survey was to locate bird nests, observe nesting behavior, and/or demarcate sensitive habitat to avoid impacts to nesting birds and sensitive species by volunteer clean-up activities among vegetation in the Los Angeles Riverbed during the nesting bird season (February through August). During the event volunteers will walk among the vegetation in and adjacent to the river while removing trash by hand. No vegetation removal is planned. Volunteers will be instructed to avoid dense shrubs, trees, and other vegetation as to avoid any nests.

Methods: Due to the heightened pedestrian activity in the river expected to occur due to the clean-up events, the biologist concentrated their efforts towards detecting ground nesting birds, species that nest low in shrubs and herbaceous vegetation that could be inadvertently destroyed by volunteers, and species that may be more sensitive to disturbance such as heron rookeries and raptor nests.

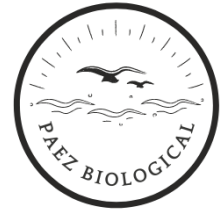
The study area was inspected between 5:30 AM and 7:15 AM on the morning of July 15, 2022. The clean-up event in this area was scheduled for the next day, July 16, 2022. Conditions were calm, with a temperature of 65-68° F, a breeze at 0-1 mph and cloud cover of approximately 75% throughout. The biologist walked throughout the clean-up area and inspected all vegetation and structures where volunteers were likely to work. Areas not directly inspected were scanned. The survey was conducted by visually inspecting vegetation using 8x42 binoculars, concentrating on the underside of the canopy and branch forks and looking for cavities on the surface of the trunks and major branches. Additionally, the biologist observed all birds in the vicinity and watched for signs of nesting behaviors such as carrying food or nesting material.

Results: The creek is lined on both sides by cattails and bulrushes, marked in red in Figure 1. Song sparrows (*Melospiza melodia*) were heard singing in the dense vegetation. No nests were observed. No nesting raptors were detected. No active heron, egret, cormorant, or stilt nests were detected.

Recommendations: It is my recommendation that the following occur:

1. Provide staff to offer guidance to volunteers prior to beginning as well as during clean-up activities to avoid stands of cattails, willows, and other dense vegetation that may contain nesting birds. Trash in the cattails and bulrushes should be left in place to avoid disturbance.
2. Volunteers should not attempt to cross the river. Cones or other clear demarcation should be provided to prevent volunteers from leaving the clean-up area.

Paez Biological Consulting
1103 E Orange Grove Blvd.
Pasadena, California 91104
(626) 513-5230



3. Encourage volunteers to take note of any bird behavior that may indicate the presence of a nest (broken wing display, alarm calls, dive bombing). If volunteers observe this behavior, it is recommended that they avoid the area and alert staff monitoring the site during the clean-up.

It is my professional opinion that these procedures are adequate to prevent the inadvertent destruction of nests and avoid disturbing raptors, heron rookeries, and nesting birds by clean-up activities. The results of this survey were discussed with Zoe Witt (Operations Manager, FoLAR) prior to the event.

Please let me know if you have any questions.

Taylor Paez

Taylor Paez, Biologist
tdpaez@gmail.com
(626) 513-5230

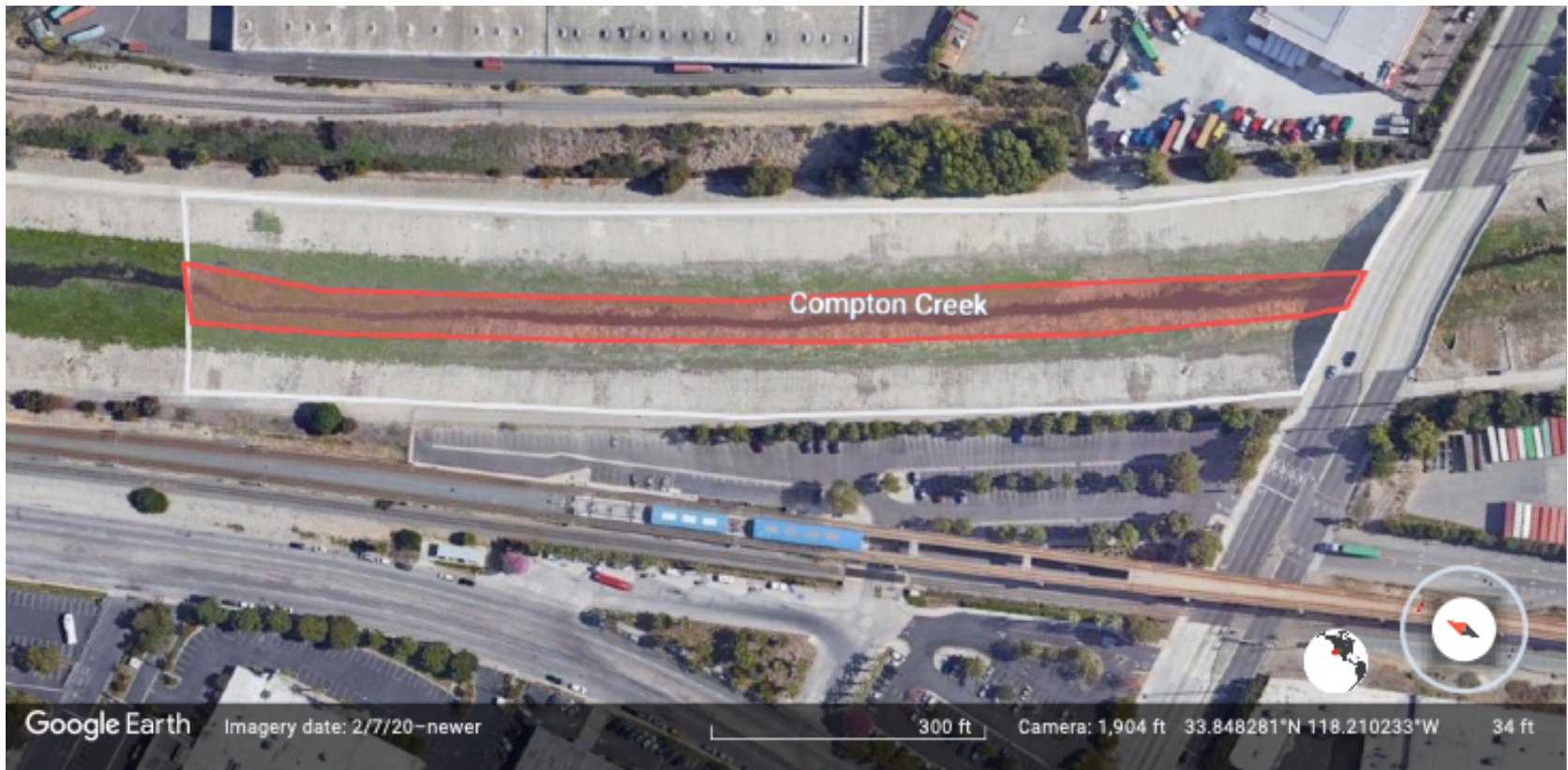


Figure 1. Map of the Compton Creek Site Survey Area. The clean-up site is marked in gray. The area in red denotes the cattails and bulrushes along the creek that should be avoided. No nests were observed.