

All Things Fishy and Past, Present and Future of the **L.A. RIVER**

William Preston Bowling- Special Projects Manager
February 28th, 2015



**Friends
of
the
LOS ANGELES
River**

The LA River circa 1927 before the “Concrete Corset”







**Friends
of
the
LOS ANGELES
River**

www.FoLAR.org



**Friends
of
the
LOS ANGELES
River**

The LA River in downtown Los Angeles circa 1900

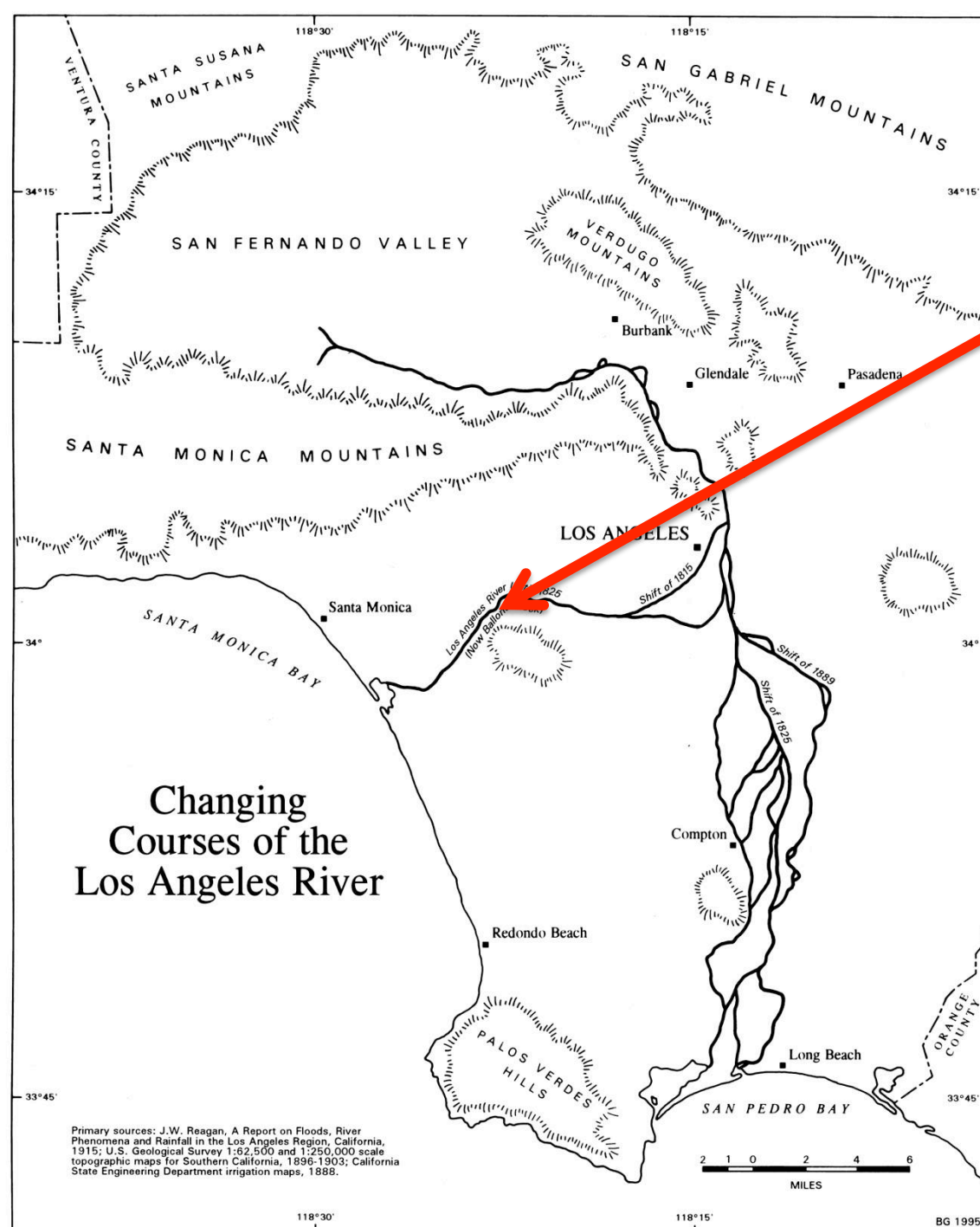
Ballona Creek
Wetlands was
once a
second mouth
of the river

Changing Courses of the Los Angeles River

Primary sources: J.W. Reagan, A Report on Floods, River Phenomena and Rainfall in the Los Angeles Region, California, 1915; U.S. Geological Survey 1:62,500 and 1:250,000 scale topographic maps for Southern California, 1896-1903; California State Engineering Department irrigation maps, 1888.

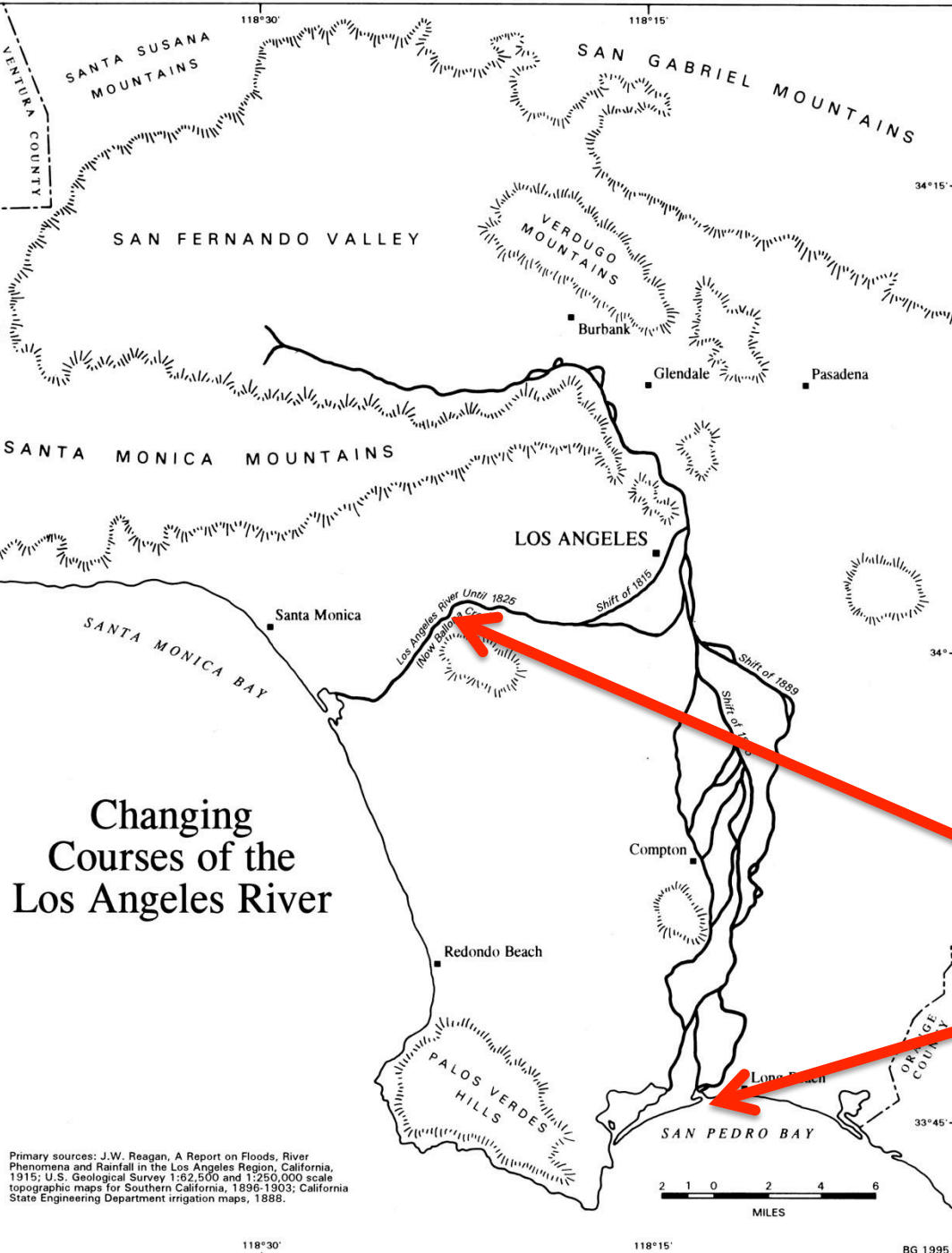
2 1 0 2 4 6
MILES

BG 1995



Changing Courses of the Los Angeles River

Primary sources: J.W. Reagan, A Report on Floods, River Phenomena and Rainfall in the Los Angeles Region, California, 1915; U.S. Geological Survey 1:62,500 and 1:250,000 scale topographic maps for Southern California, 1896-1903; California State Engineering Department irrigation maps, 1888.

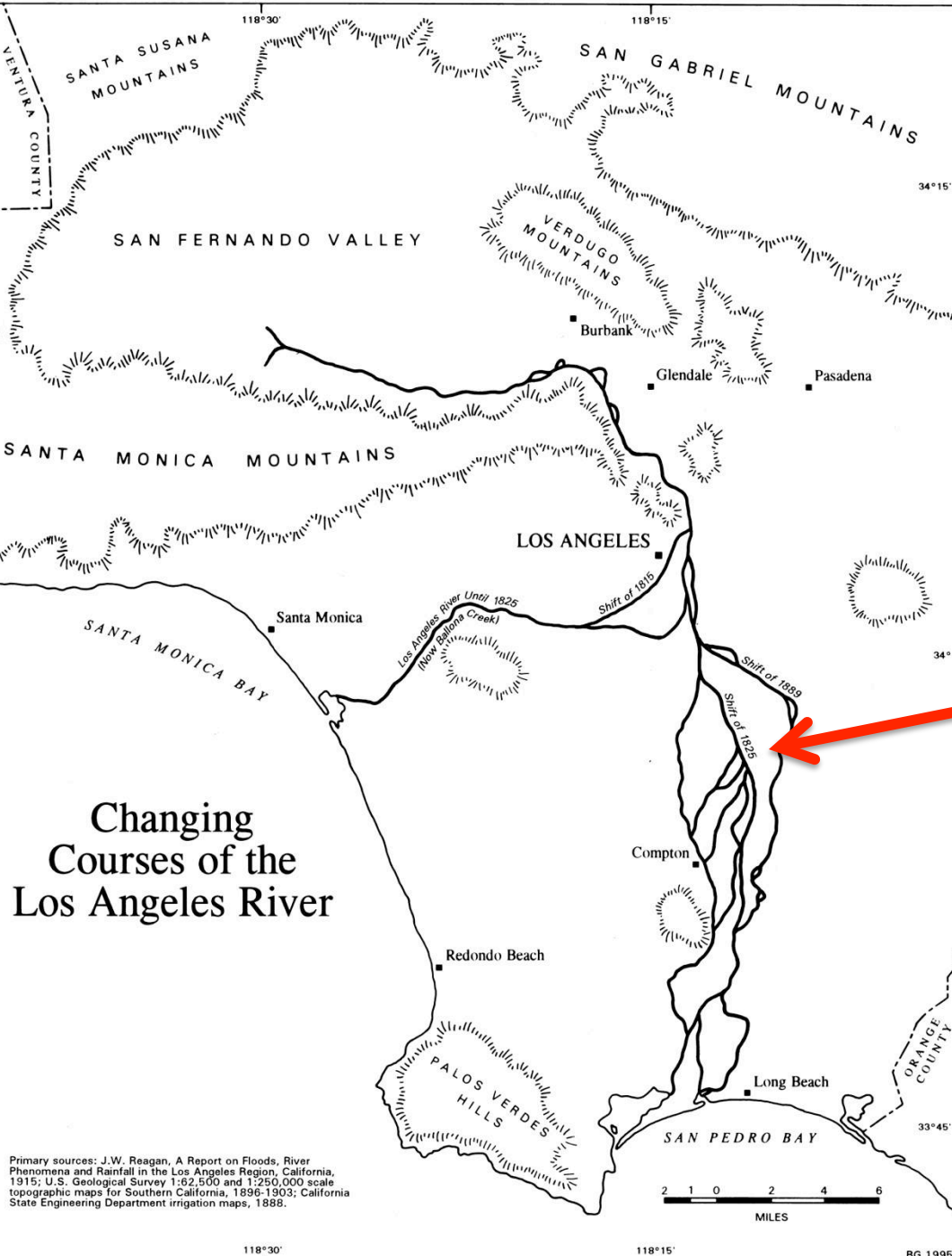


Currently the L.A. River drains into Long Beach as Ballona Creek is fed mostly by storm drains

Changing
Courses over
time, the L.A.
River was
unpredictable,
bridges built
before USACE
tamed this
mighty river
were wide
enough to
accommodate
this uncertainty

Changing Courses of the Los Angeles River

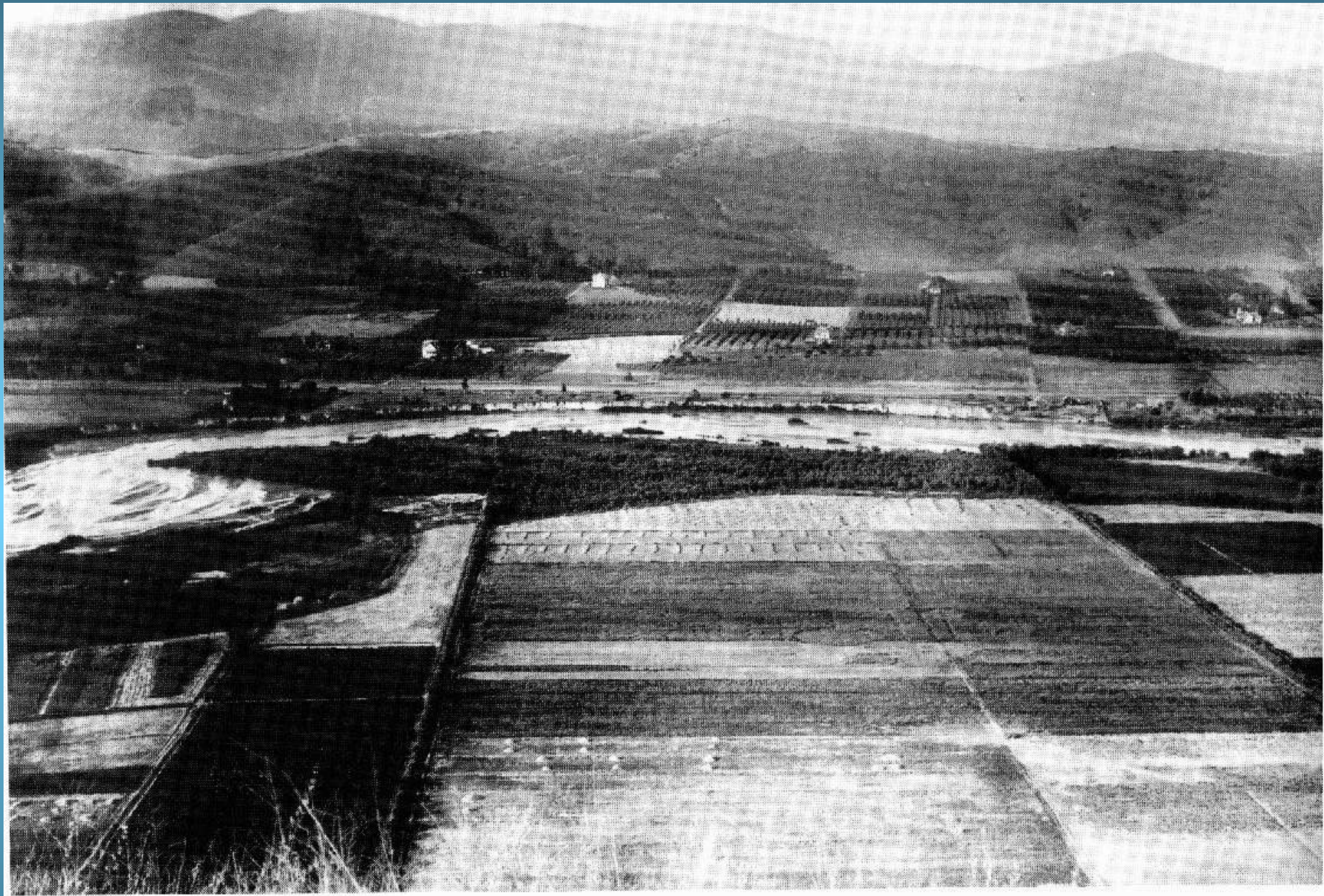
Primary sources: J.W. Reagan, A Report on Floods, River Phenomena and Rainfall in the Los Angeles Region, California, 1915; U.S. Geological Survey 1:62,500 and 1:250,000 scale topographic maps for Southern California, 1896-1903; California State Engineering Department irrigation maps, 1888.





**Friends
of
the
LOS ANGELES
River**

www.FoLAR.org



Los Angeles River changing course - Elysian Park circa 1900

Food Grows, Where Water Flows



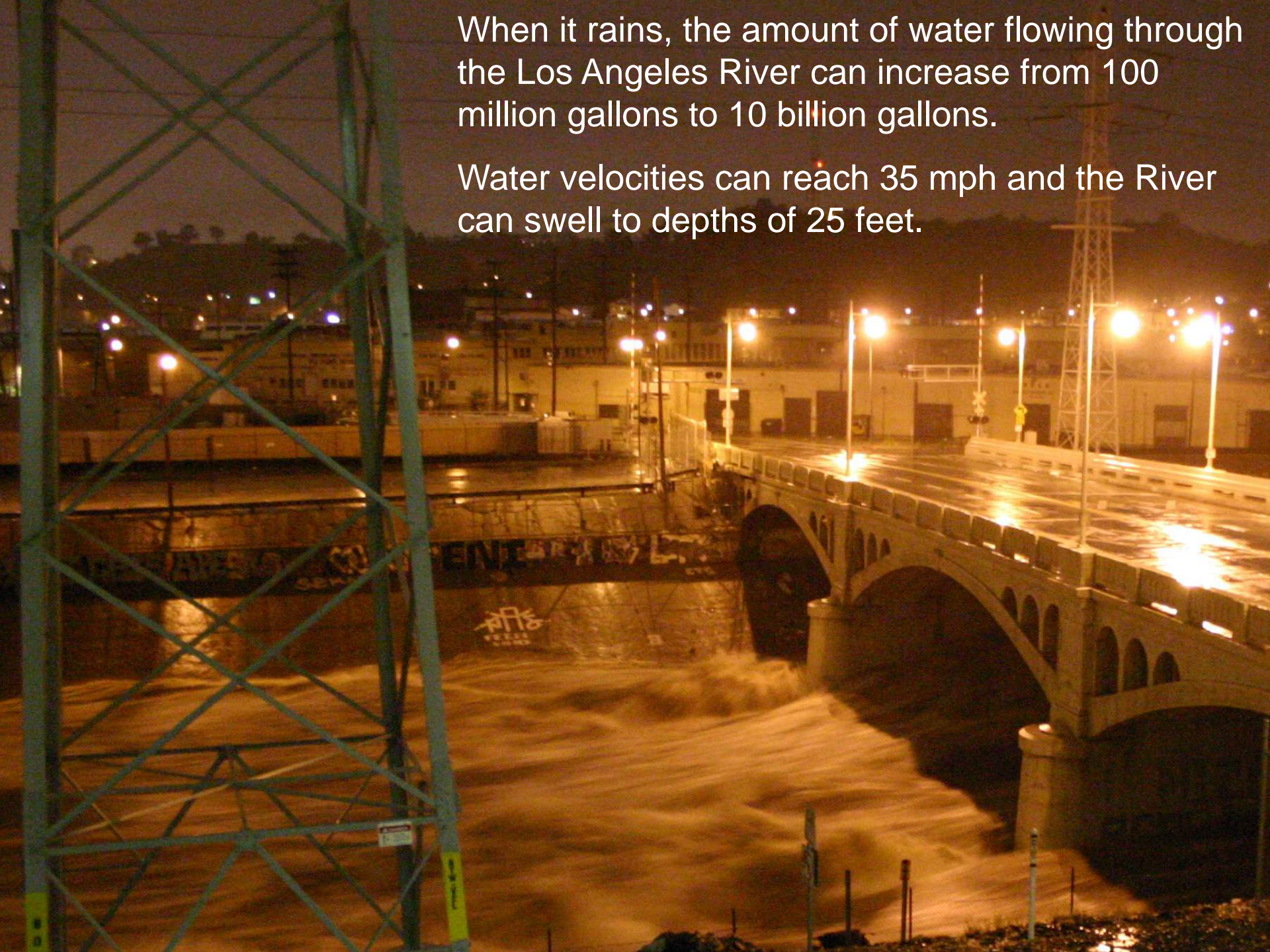


The L.A. River is steeper than the Mississippi!



When it rains, the amount of water flowing through the Los Angeles River can increase from 100 million gallons to 10 billion gallons.

Water velocities can reach 35 mph and the River can swell to depths of 25 feet.



U.S. Army Corps of Engineers





Confluence of Arroyo Calabasas and Bell Creek: the start of the LA River proper, 2004



River Advocacy



**Friends
of
the
LOS ANGELES
River**

www.FoLAR.org



**Friends
of
the
LOS ANGELES
River**

www.FoLAR.org

Education Programs



**Friends
of
the
LOS ANGELES
River**

www.FoLAR.org

25 Years of Taking Out The Trash



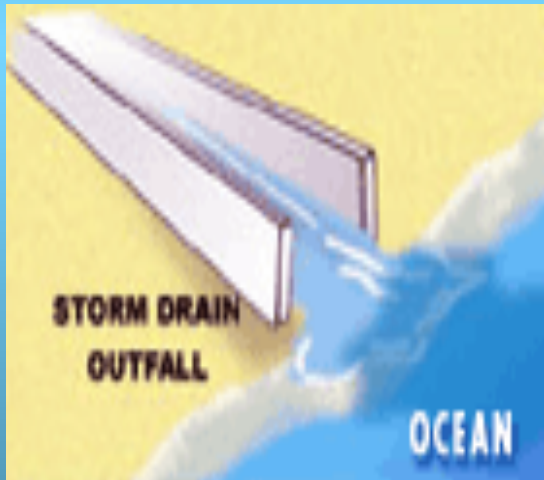
**Friends
of
the
LOS ANGELES
River**

www.FoLAR.org

Scientific Trash Sort at Five River Sites

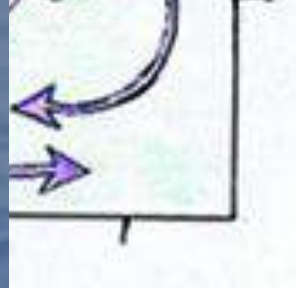
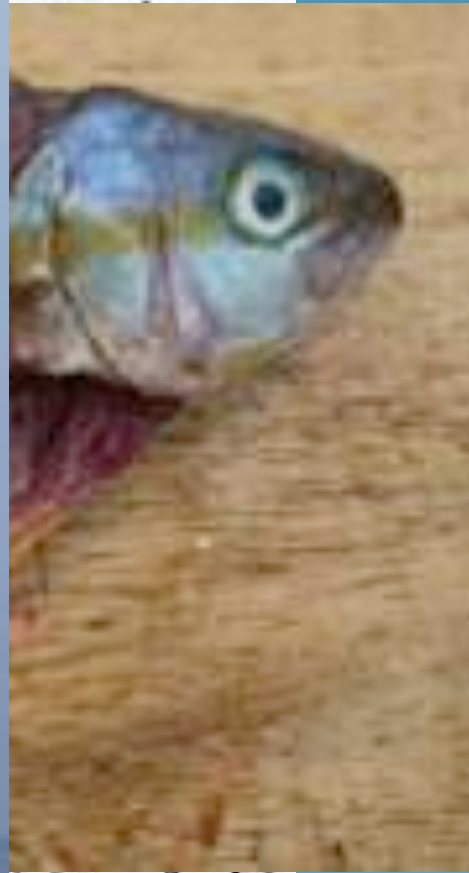
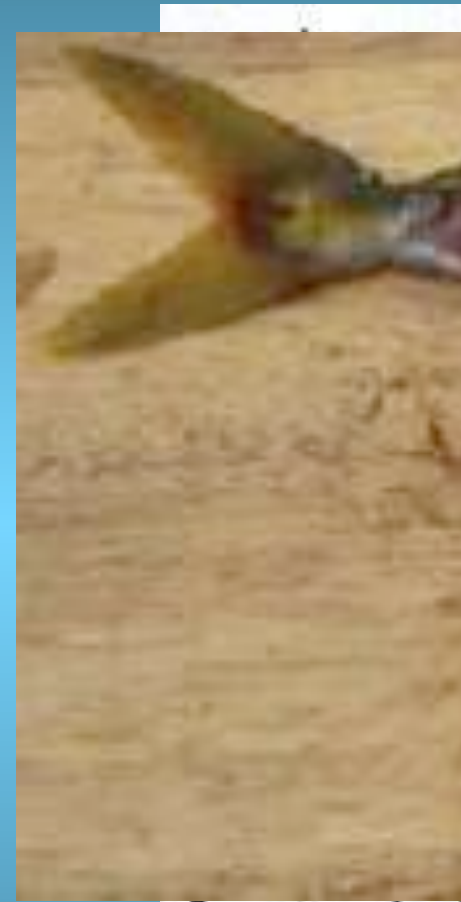


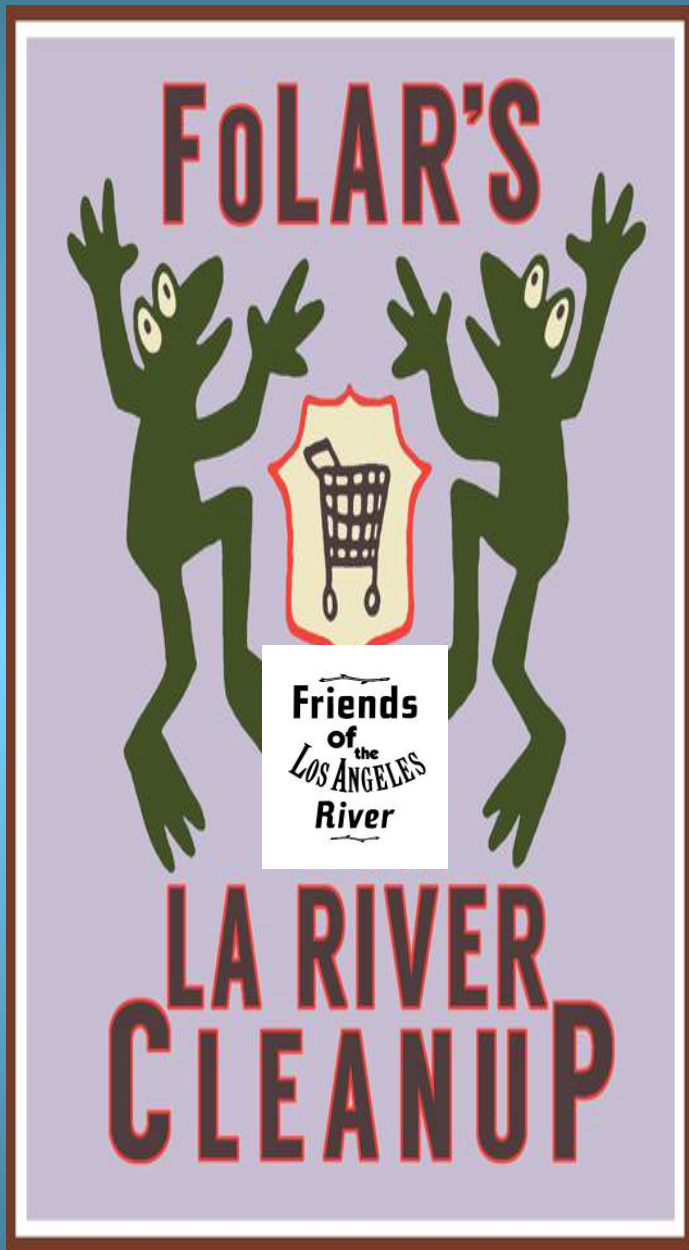
Storm Drain Run Off



P

n





April 11 - San Fernando Valley

Tujunga Wash, Sepulveda Basin, Bette Davis Picnic Area/Griffith Park and the Glendale Narrows River Walk

April 18 - Glendale Narrows

Los Feliz, Marsh Park, Steelhead Park, the Bowtie Parcel (CA State Parks), Sunnynook Footbridge and possibly two other sites

April 25 - Lower River

Compton Creek, LA River Estuary/Willow St, Golden Shore Wetland



Friends
of
the
LOS ANGELES
River

www.FoLAR.org

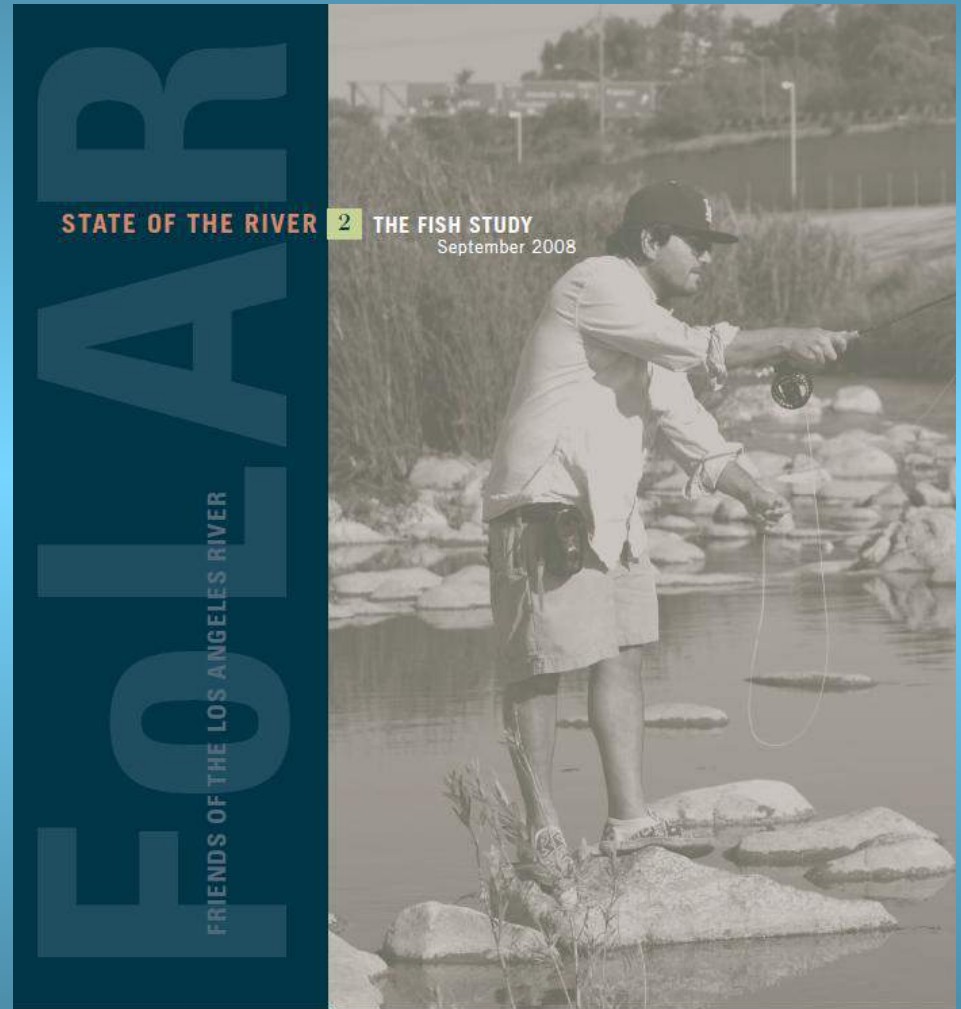
Oasis on the River/Gathering Spot/Community Center for river lovers in the heart of Elysian Valley. The Frog Spot is open All Day Saturday & Sunday with Live Music every Saturday evening. DURING SUMMER MONTHS. We sell FoLAR souvenirs and packaged refreshments, offer bike repair & bocce ball



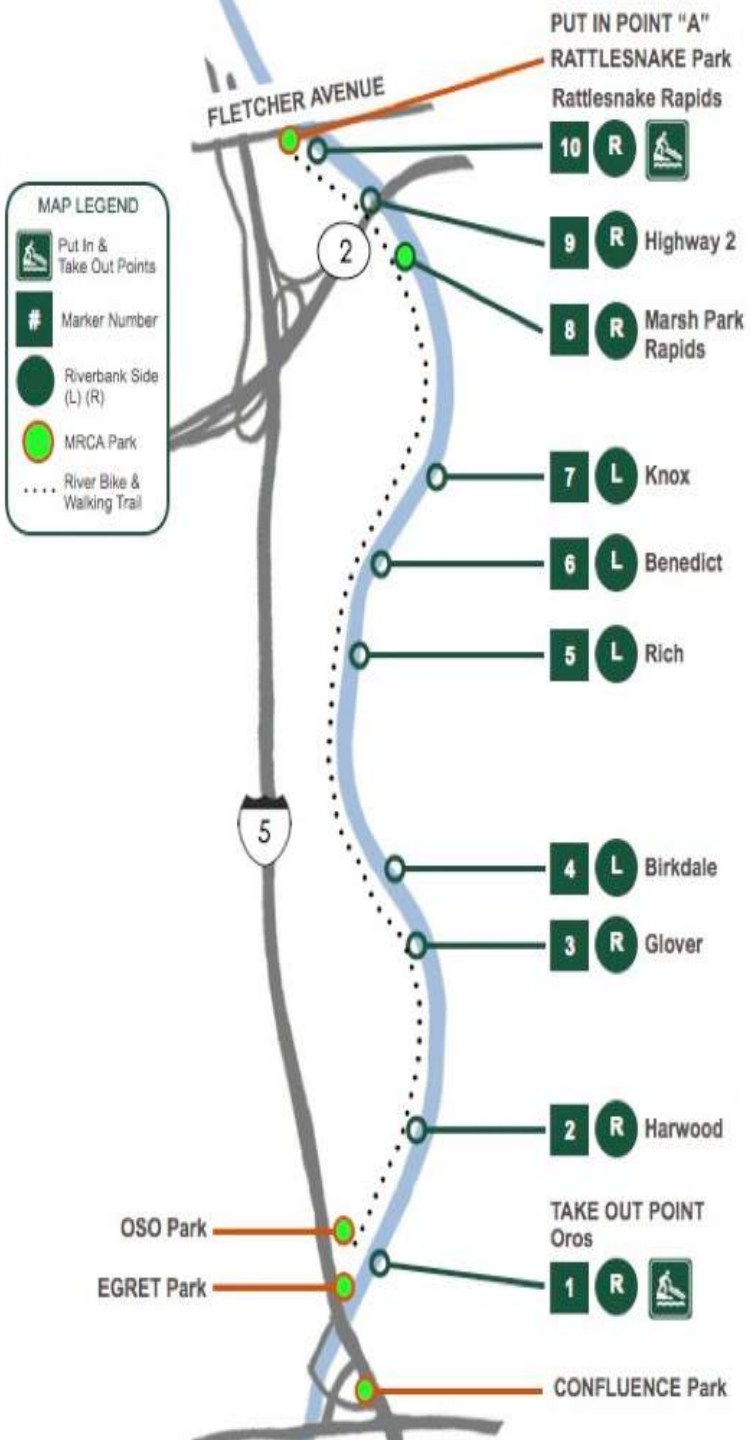


Los Angeles River Fish Study

- There is abundant fish life in the River
- During 4 sampling events 1,214 fish were caught
- Mosquito fish and tilapia were most prevalent
- Almost undetectable levels of mercury and PCBs



Download at www.FoLAR.org



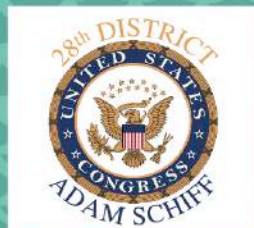
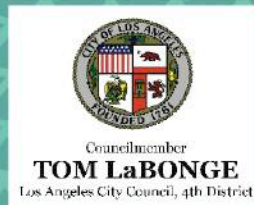
Friends of the Los Angeles River



Save the Date!

September 6th, 2014

8:30 a.m. Press Conference



FOLAR.ORG

North Atwater Park Extension







Egret



Black Necked Stilt



Cormorant



Cinnamon Teal



American Coot



Muscovy Duck



Great Blue Heron



Bufflehead (f)



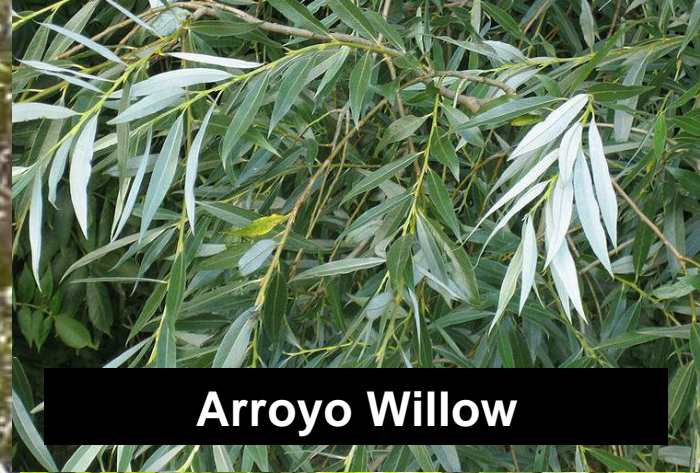
Merganser (m)



California Sycamore



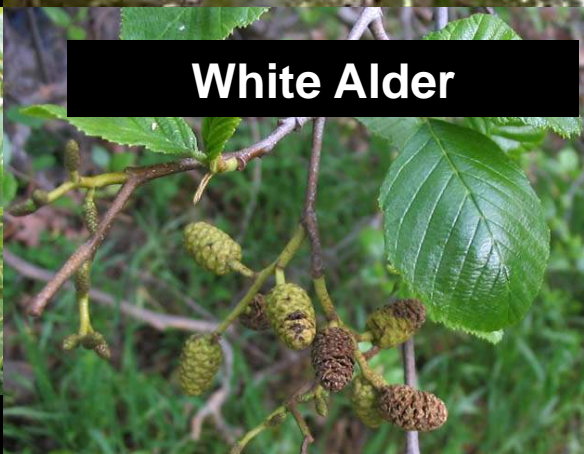
Freemont Cottonwood



Arroyo Willow



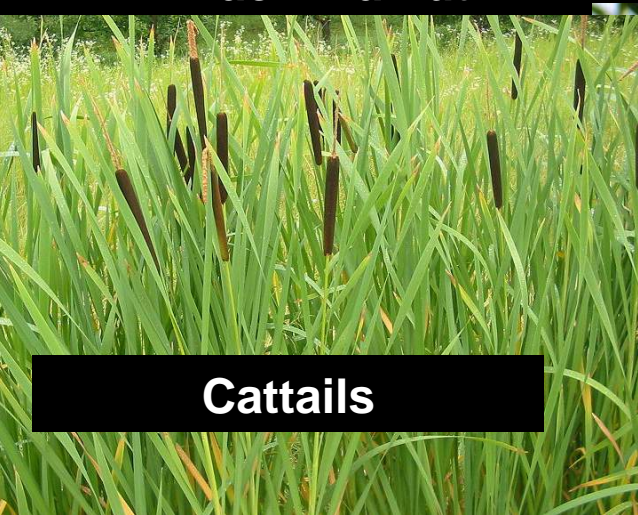
Black Walnut



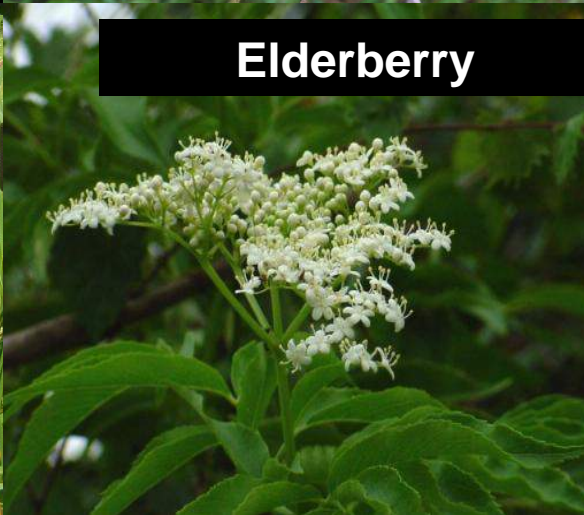
White Alder



Coastal Live Oak



Cattails

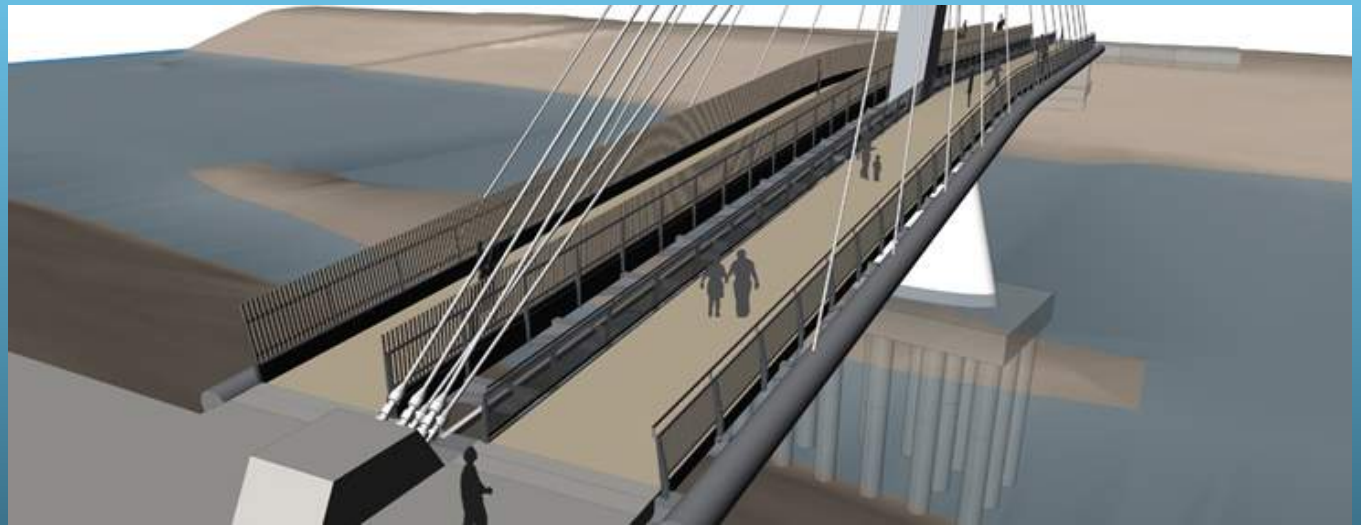


Elderberry



Mulefat

North Atwater Crossing







Friends of the Los Angeles River



SAVE THE DATE!

SEPTEMBER 5TH, 2015

On August 28th, 2012, Governor Brown signed SB 1201 (DeLeon). Page four, section nine (l) states, "... designate areas of the Los Angeles River suitable for public use, considering both recreational and educational activities." This opened up a recreational zone alongside the Golden State Freeway, inside a natural bottom-section of the Los Angeles River that allowed fishing and kayaking. Throughout 2013, the kayak programs were featured on nearly every news channel and/or website about California, yet there was no mention of fishing. There are only two days a year open to Californians to fish without a state license, and this is one of them!

Friends of the Los Angeles River is taking the lead on bringing anglers young and old to take part in a fishing throwback ... Save the date!

North Atwater Park . 3900 Chevy Chase Dr.
Los Angeles, CA 90039

Education . Stewardship . Family

Catch & Release Fishing Contest

For the Experienced

9 a.m. - 10 a.m.

Two categories: Flyfishing & Traditional

Special Prize for the "Rarest Species!"

Family Fish: 10 a.m.

*Adult-Supervised Children learn to fish
with morning angler volunteers*

Awards: 11:00 a.m.

Blue Ribbons given to registered child anglers

FIND OUT MORE AND REGISTER: [HTTP://FOLAR.ORG/EVENT/OFF-THA-HOOK-FISHING-EVENT/](http://folar.org/event/off-tha-hook-fishing-event/)

SPONSORED BY



Rubio's

laniverflyfishing

Fishing for carp, waiting for steelhead







Volunteer anglers needed to study Fish of the Los Angeles River



Saturday, March 28th, 2015

2:00 P M | Long Beach



Contact WPB@FoLAR.org for additional information and to reserve your spot

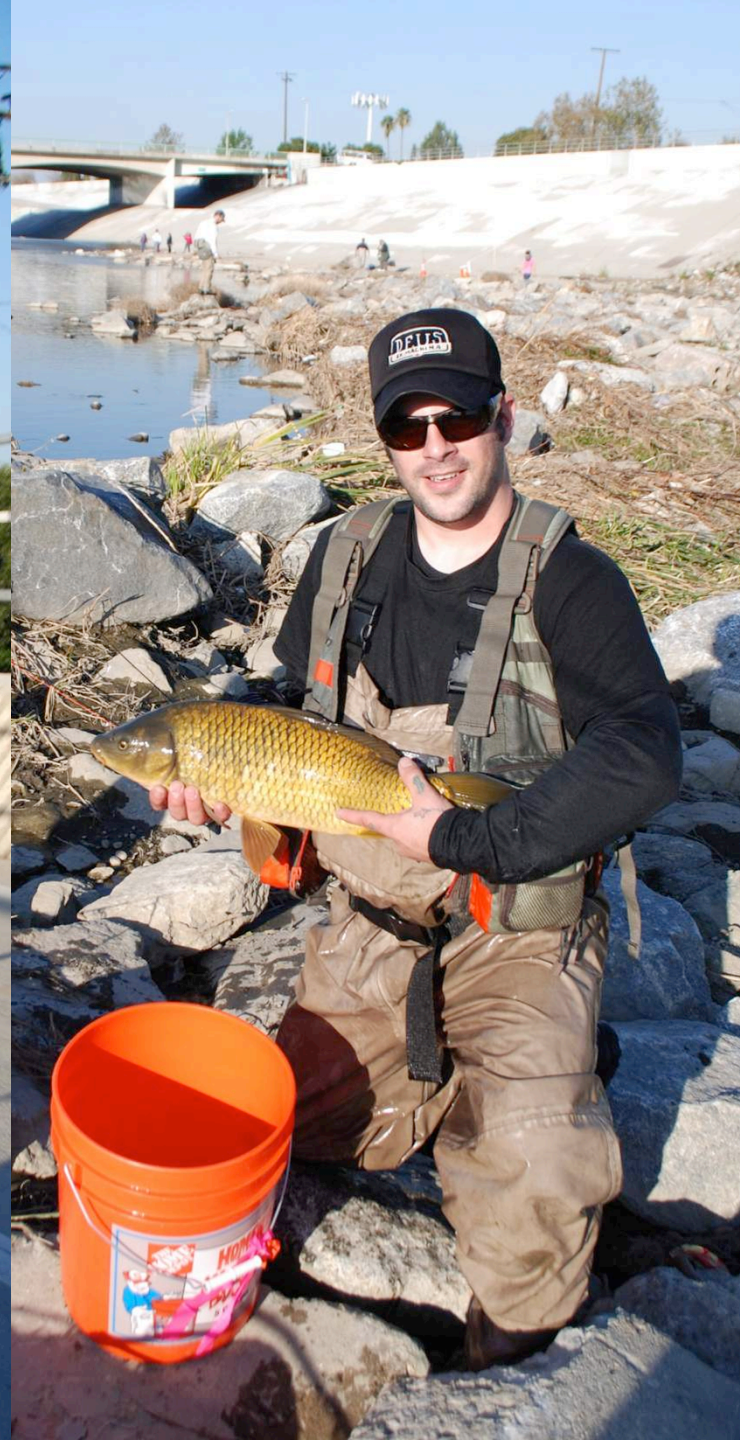




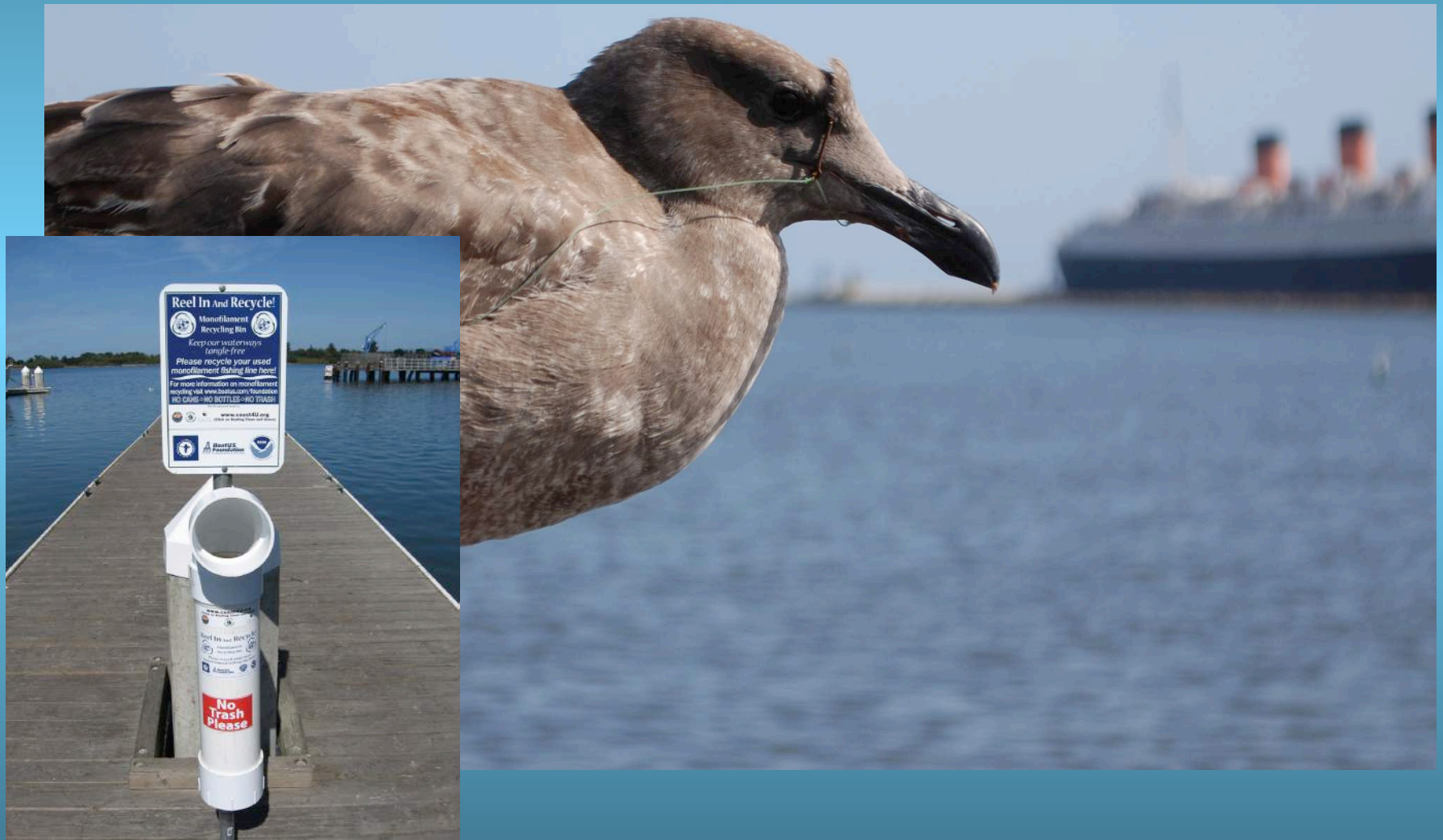








Fishing Line Recycling Program



« Projects

[Terms & Rules](#) | [Join this project](#)**ADD
OBSERVATIONS**

Fish of the LA River – Peces del Río de Los Angeles

» [Observations / Map](#)

14 observations

[Atom](#) / [KML](#) / [CSV](#)» [Checklist](#)

3 of 259 taxa observed

» [Journal](#)» [Members](#)

13 members

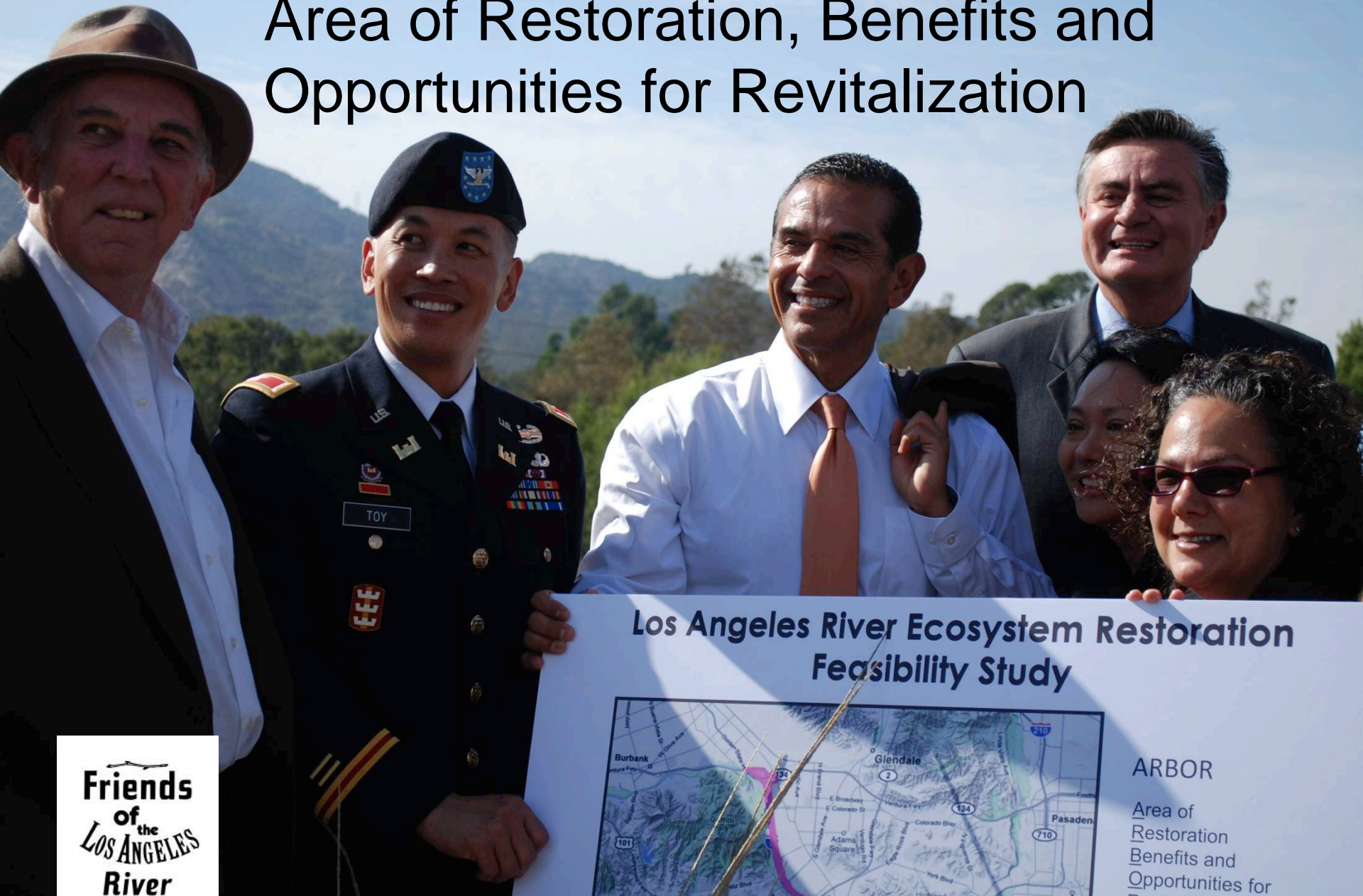




EPA Designation July 2010



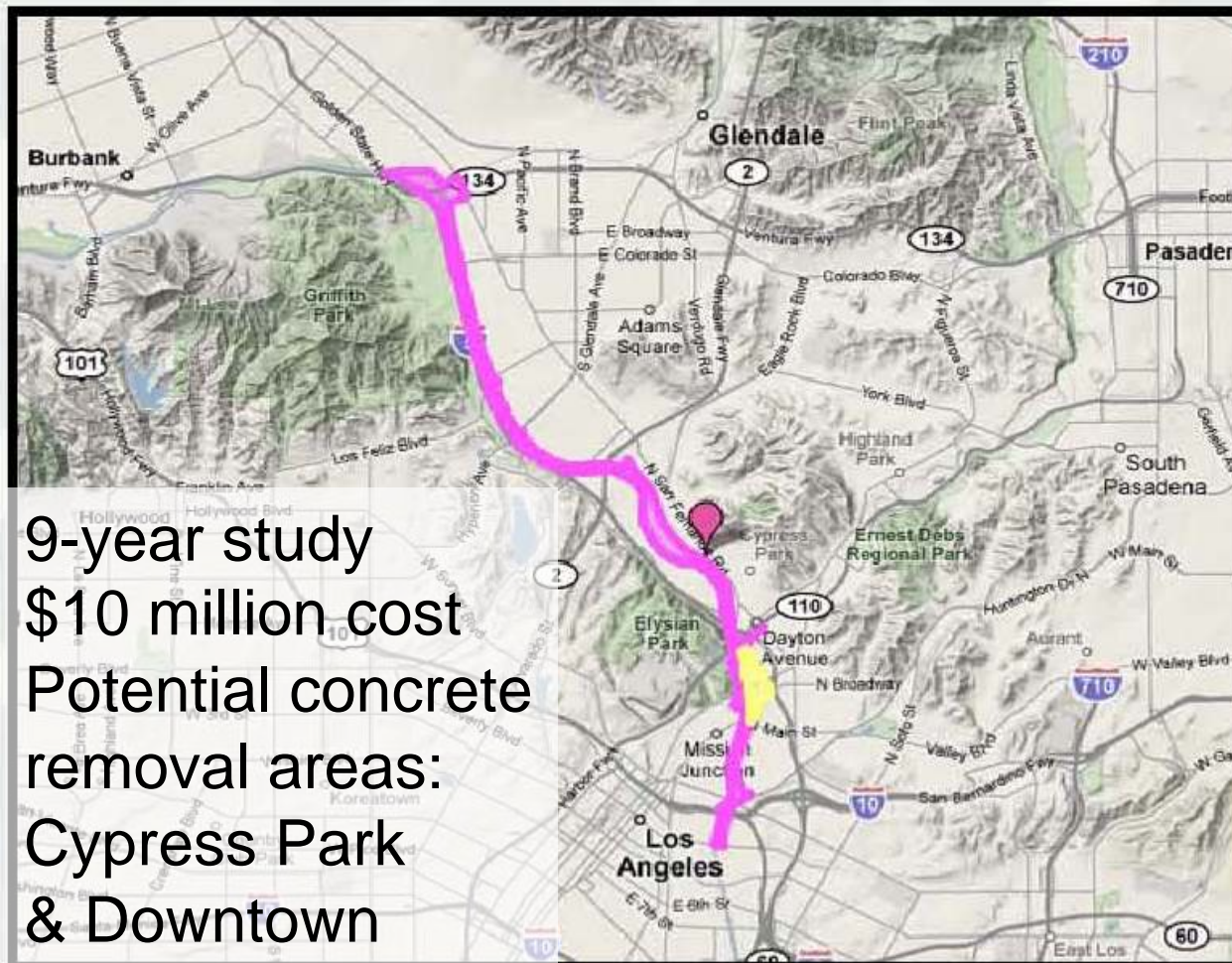
Area of Restoration, Benefits and Opportunities for Revitalization



**Friends
of
the
LOS ANGELES
River**

www.FoLAR.org

Los Angeles River Ecosystem Restoration Feasibility Study



9-year study
\$10 million cost
Potential concrete
removal areas:
Cypress Park
& Downtown

ARBOR Area

Alternative with
Restoration
Benefits and
Opportunities for
Revitalization

Revised area to focus
development and
evaluation of alternatives
for selection and
recommendation of
restoration/revitalization
project(s).

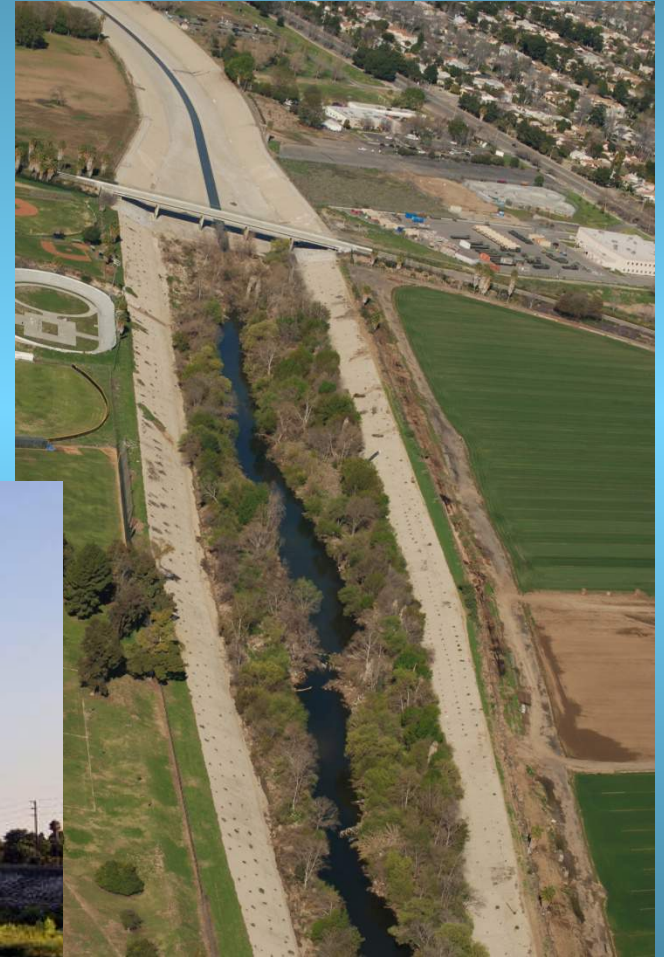
US Army Corps of Engineers Stewardship of the Los Angeles River



BUILDING STRONG®

Three Soft Bottom Sections:

Glendale Narrows, Sepulveda Basin & Long Beach Estuary



The Estuary in Long Beach



Sixth Street Viaduct Replacement



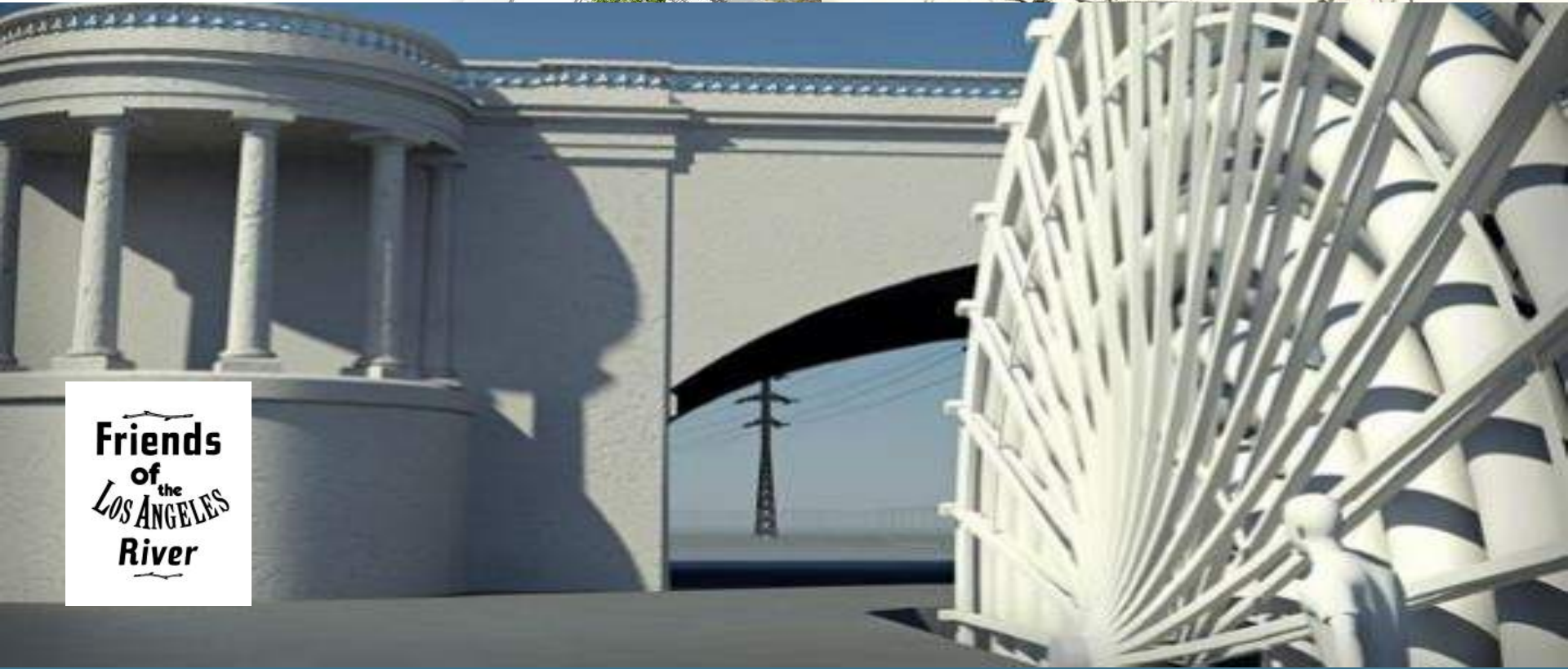
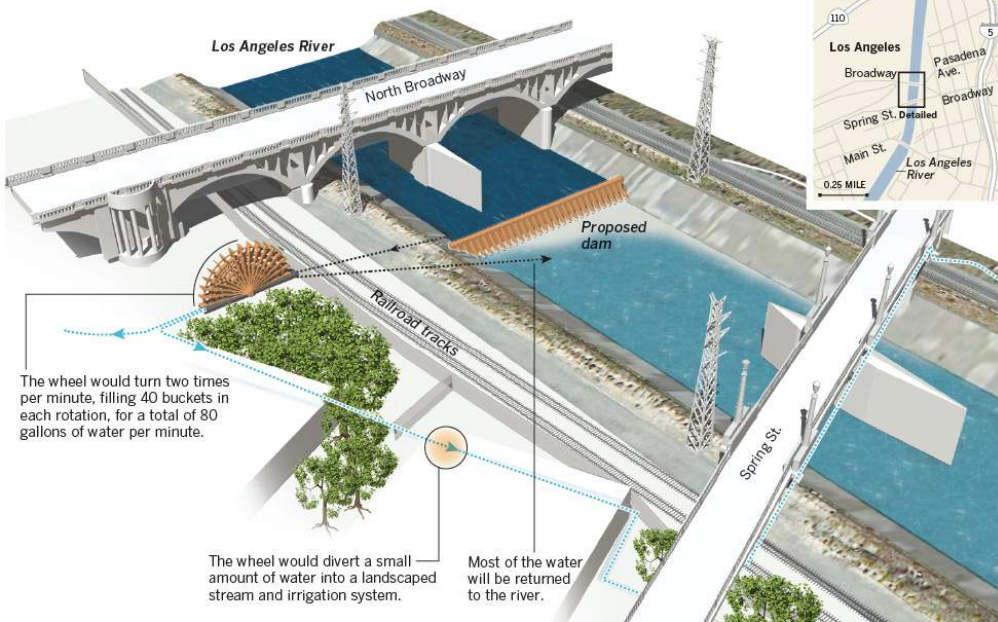


Friends
of
the
LOS ANGELES
River

State Historic Park (Cornfields) Before



State Historic Park (Cornfields) Today



William Mulholland



Water Supply



Prior to 1960, approximately 80% of rainwater percolated into the ground and replenished underground water supplies.

Today, only approximately 8% of rainwater percolates into the ground and like most cities in California, ground water supplies only a small portion (11%) of the water we use in Los Angeles

88% of the water we use today is piped into our homes from other watersheds.

LA River Bike Path

Future vision connects LA River Bike Path from Canoga Park to Long Beach – 52 miles

NBCUniversal to contribute over \$13M to bike path segment from Griffith Park to Studio City

Commuter & recreational use

Events on path: LA River Ride, Wrigley Run, LA River Fun Run, LA Chinatown Firecracker Run



FoLAR In-Channel Bike Path





SUNNYSOOK RIVER PARK - CONCEPT OVERVIEW

Glendale Narrows Riverwalk



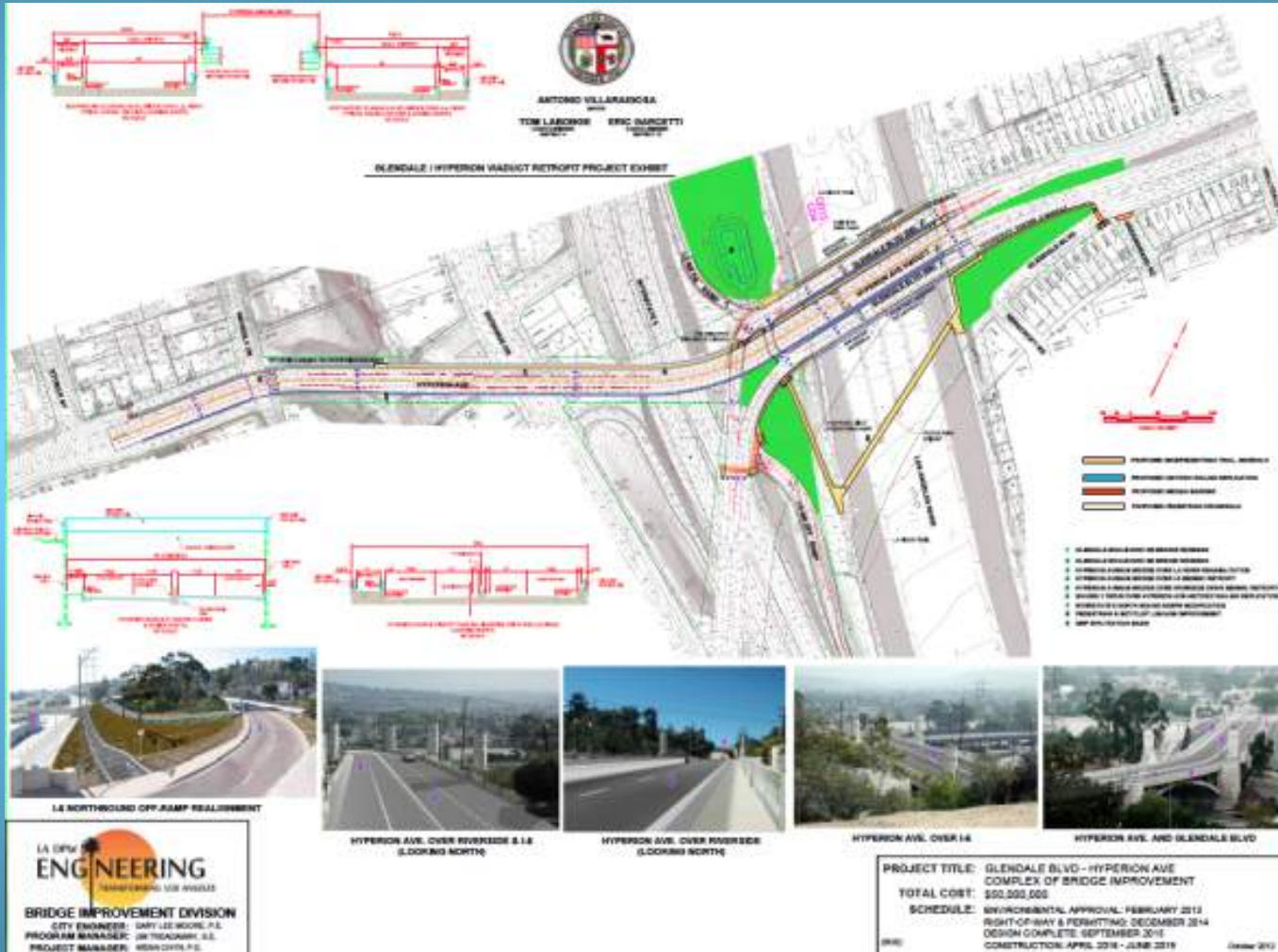
Riverside Figueroa Bridge



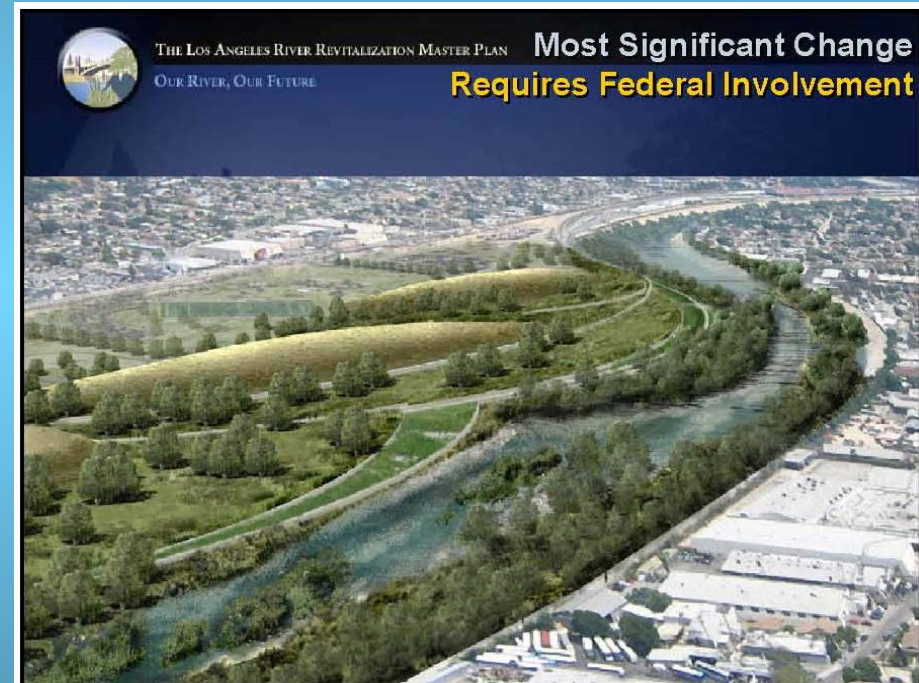
Fletcher Drive Bridge Retrofit




Hyperion Bridge



Taylor Yard G2 Parcel



Taylor Yard Bridge

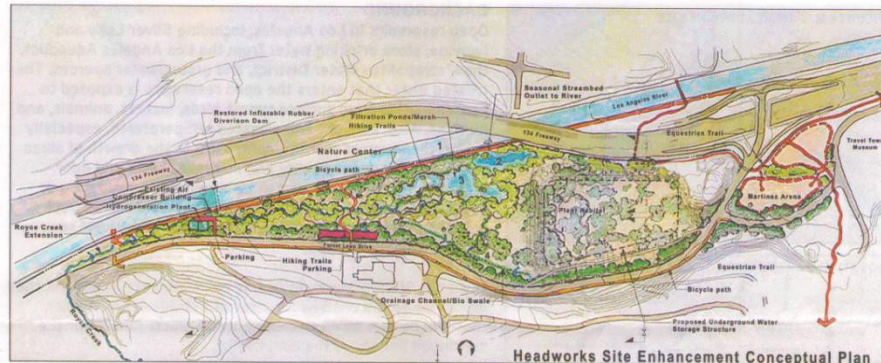
PROJECT INFORMATION REPORT									
City of Los Angeles	Bureau of Engineering								
Department of Public Works									
Taylor Yard Bikeway/Pedestrian Bridge over LA Rvr (X166)									
<table border="1"> <tr> <th>Current Phase</th> </tr> <tr> <td>Design</td> </tr> </table>	Current Phase	Design	<table border="1"> <tr> <th>Scope of Work</th> </tr> <tr> <td>Project Title is "Taylor Yard Bikeway and Pedestrian Bridge over LA River". The scope of work consists of the design and construction of a new landmark/iconic pedestrian bridge with a bikeway connecting the existing bikeway along the west bank of the LA River to an existing road on the eastside of the LA River. It shall be approximately 400 ft. long with a 17 ft clear bikeway. The new bridge design will focus on visual aesthetics and include a DWP recycled water line. Also, the project will include an on-grade railroad crossing. The overall intent of building this new bridge is to eventually connect the bike path at San Fernando Road to the LA River bikeway.</td> </tr> </table>	Scope of Work	Project Title is "Taylor Yard Bikeway and Pedestrian Bridge over LA River". The scope of work consists of the design and construction of a new landmark/iconic pedestrian bridge with a bikeway connecting the existing bikeway along the west bank of the LA River to an existing road on the eastside of the LA River. It shall be approximately 400 ft. long with a 17 ft clear bikeway. The new bridge design will focus on visual aesthetics and include a DWP recycled water line. Also, the project will include an on-grade railroad crossing. The overall intent of building this new bridge is to eventually connect the bike path at San Fernando Road to the LA River bikeway.				
Current Phase									
Design									
Scope of Work									
Project Title is "Taylor Yard Bikeway and Pedestrian Bridge over LA River". The scope of work consists of the design and construction of a new landmark/iconic pedestrian bridge with a bikeway connecting the existing bikeway along the west bank of the LA River to an existing road on the eastside of the LA River. It shall be approximately 400 ft. long with a 17 ft clear bikeway. The new bridge design will focus on visual aesthetics and include a DWP recycled water line. Also, the project will include an on-grade railroad crossing. The overall intent of building this new bridge is to eventually connect the bike path at San Fernando Road to the LA River bikeway.									
<table border="1"> <tr> <th>Construction Information</th> </tr> <tr> <td>Expected Duration: from 9/21/2014 to 9/1/2016 Construction Cost: \$5,300,000 Contractor: No Contractor Selected</td> </tr> </table>	Construction Information	Expected Duration: from 9/21/2014 to 9/1/2016 Construction Cost: \$5,300,000 Contractor: No Contractor Selected							
Construction Information									
Expected Duration: from 9/21/2014 to 9/1/2016 Construction Cost: \$5,300,000 Contractor: No Contractor Selected									
<table border="1"> <tr> <th>Program Information</th> </tr> <tr> <td>Program: Municipal Facilities Architect Project Mgr: Carl Nelson PM Phone: (213) 485-4474 Lead Division: Architectural Division Work Order: E700311A (Active)</td> </tr> </table>	Program Information	Program: Municipal Facilities Architect Project Mgr: Carl Nelson PM Phone: (213) 485-4474 Lead Division: Architectural Division Work Order: E700311A (Active)							
Program Information									
Program: Municipal Facilities Architect Project Mgr: Carl Nelson PM Phone: (213) 485-4474 Lead Division: Architectural Division Work Order: E700311A (Active)									
<table border="1"> <tr> <th>Council District(s)</th> </tr> <tr> <td>1 - Ed P. Reyes, 13 - Eric Garcetti</td> </tr> </table>	Council District(s)	1 - Ed P. Reyes, 13 - Eric Garcetti	<table border="1"> <tr> <th>Project Status</th> </tr> <tr> <td>Project is in Pre-Design Phase. Design is anticipated to start in the Spring of 2013.</td> </tr> </table>	Project Status	Project is in Pre-Design Phase. Design is anticipated to start in the Spring of 2013.				
Council District(s)									
1 - Ed P. Reyes, 13 - Eric Garcetti									
Project Status									
Project is in Pre-Design Phase. Design is anticipated to start in the Spring of 2013.									
<table border="1"> <tr> <th>Neighborhood Council(s)</th> </tr> <tr> <td>Elysian Valley Riverside NC</td> </tr> </table>	Neighborhood Council(s)	Elysian Valley Riverside NC							
Neighborhood Council(s)									
Elysian Valley Riverside NC									
<table border="1"> <tr> <th>Geographic Information</th> </tr> <tr> <td>Thomas Guide: 594H5 Planning Area: Central Area Address: Taylor Yard at LA River & San Fernando Rd</td> </tr> </table>	Geographic Information	Thomas Guide: 594H5 Planning Area: Central Area Address: Taylor Yard at LA River & San Fernando Rd							
Geographic Information									
Thomas Guide: 594H5 Planning Area: Central Area Address: Taylor Yard at LA River & San Fernando Rd									
<table border="1"> <tr> <th>Information Resources</th> </tr> <tr> <td>Listed below are various resources available for finding more information related to projects.</td> </tr> <tr> <td>City of Los Angeles Internet Home Page http://www.lacity.org/</td> </tr> <tr> <td>Bureau of Engineering Internet Home Page http://eng.lacity.org/</td> </tr> <tr> <td>BOE Mapping Application (Navigate LA) http://navigate.la.lacity.org/</td> </tr> <tr> <td>BOE Public Right of Way Reservation System http://navigate.la.lacity.org/pwrsview/</td> </tr> <tr> <td>Bureau of Engineering Project Information Reports http://eng.lacity.org/lupnl/</td> </tr> <tr> <td>Bureau of Engineering Projects Out to Bid http://eng.lacity.org/docs/dpw/bids/consbids.pdf</td> </tr> </table>	Information Resources	Listed below are various resources available for finding more information related to projects.	City of Los Angeles Internet Home Page http://www.lacity.org/	Bureau of Engineering Internet Home Page http://eng.lacity.org/	BOE Mapping Application (Navigate LA) http://navigate.la.lacity.org/	BOE Public Right of Way Reservation System http://navigate.la.lacity.org/pwrsview/	Bureau of Engineering Project Information Reports http://eng.lacity.org/lupnl/	Bureau of Engineering Projects Out to Bid http://eng.lacity.org/docs/dpw/bids/consbids.pdf	
Information Resources									
Listed below are various resources available for finding more information related to projects.									
City of Los Angeles Internet Home Page http://www.lacity.org/									
Bureau of Engineering Internet Home Page http://eng.lacity.org/									
BOE Mapping Application (Navigate LA) http://navigate.la.lacity.org/									
BOE Public Right of Way Reservation System http://navigate.la.lacity.org/pwrsview/									
Bureau of Engineering Project Information Reports http://eng.lacity.org/lupnl/									
Bureau of Engineering Projects Out to Bid http://eng.lacity.org/docs/dpw/bids/consbids.pdf									

Headworks Reservoir

Los Angeles  Department of Water & Power

HEADWORKS RESERVOIR SILVER LAKE RESERVOIR COMPLEX STORAGE REPLACEMENT

Fact Sheet



ONE OF SEVERAL CONCEPTUAL DESIGNS BEING CONSIDERED FOR THE LOS ANGELES RIVER ECOSYSTEM RESTORATION PROJECT

PROJECT DETAILS

In order to comply with these two regulations, LADWP is planning to build the following facilities at the Headworks Spreading Grounds, a 43-acre site adjacent to the Los Angeles River and between the City of Burbank and Griffith Park:

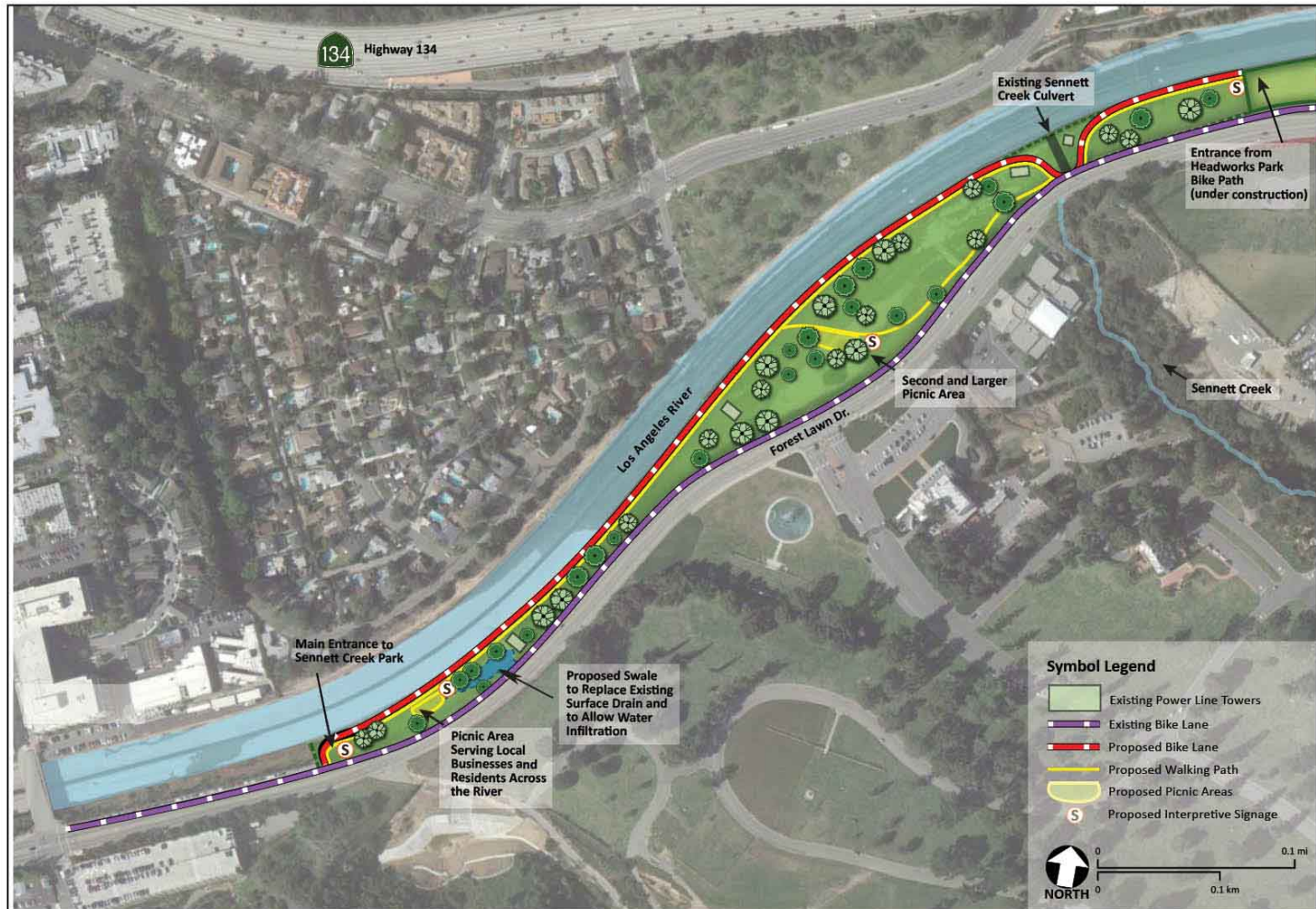
- Two buried concrete reservoirs with a 54 and 56-million-gallon storage capacity, covered with two to three feet of soil and native vegetation
- A 4-megawatt hydroelectric power plant (not needed for compliance)
- A flow regulating station with a flow capacity of 250 cubic feet per second
- A trunk line, 96 inches in diameter, 6600 feet long, with a 3000-foot tunneling portion

In addition, the LADWP and the U.S. Army Corps of Engineers are in a partnership to design and construct the Los Angeles River Ecosystem Restoration project. This project will be built after the construction of the reservoir is complete and is proposed to include riparian wetlands in a park like setting and open areas with equestrian, cyclist, and pedestrian access.

PROJECT SCHEDULE & COST

- | | |
|--------------------------------|-------------------------------|
| • Design Phase: | March 2008 - December 2011 |
| • Bid Phase: | July 2011 - December 2011 |
| • Construction Phase: | April 2012 - December 2017 |
| • Ecosystem Restoration: | November 2017 - November 2018 |
| • Estimated Construction Cost: | \$230 million |

Sennett Creek Park



Johnny Carson Park Redesign





Lauren Bon's Not A Cornfield is a living sculpture in the form of a field of corn. Lauren intend this to be an event that aims at giving focus for reflection and action in a city unclear about where it's energetic and historical center is. 32 acres of brownfield and bring in more than 1,500 truck loads of earth from elsewhere in order to prepare this rocky and mixed terrain for the planting of a million seeds. This art piece redeems a lost fertile ground, transforming what was left from the industrial era into a renewed space for the public.



**Friends
of
the
LOS ANGELES
River**

Artist Robert Rossoff saw a 3D canvas (from his experience working on 3D films such as "Shrek 2," "Shrek 3," "Madagascar,") creating a series of stop-motion style on each of the fifteen 4.5-foot tall by 8-foot long wing walls abutting the historic floodgates. The installation begins lyrically, with a trout swimming through three "frames." As the trout exits on the fourth wall, an egret swoops in, wings flapping until it reaches the last wing wall, with a tile footprint of the L.A. River.



**Friends
of
the
LOS ANGELES
River**

Best known for his “River Gates” – Brett Goldstone’s relationship to the L.A. River goes back decades. Living a block away from the river, from time to time he builds “powered” artwork by using the LA Rivers hydrolic energy to light up the Avenue 64 bridge and a hand-made railroad engine.



For 35 plus years Leo Limon has been painting the Los Angeles “River Cat” faces on the storm-drain covers and is involved with groups whose efforts are to revive the Los Angeles River as a historic region, cultural art enclave and tourist destination.



**Friends
of
the
LOS ANGELES
River**

In her 8-hour performance, “This Here and That There”, artist Vlatka Horvat continuously rearranges 50 chairs over a period of eight hours. Each successive chair arrangement implies a set of possible relations between their imagined occupants, evoking a range of possibilities related to human interaction – dialogue, encounter, communication, and conflict.



**Friends
of
the
LOS ANGELES
River**

**Friends
of the
LOS ANGELES
River**



Frank Romero Created The Anza Mural celebrating the 1775-1776 Juan Bautista de Anza expedition, incorporating iconography based on Tongva symbols for Mountains, River Dolphins



Friends
of
the
LOS ANGELES
River



FoLAR and Muralist ManONE got together with graffiti artists from across the globe to create the “Meeting of The Styles” a mile long mural inside the Arroyo Seco-L.A. River Confluence



DuckThe art comes courtesy of guerrilla installers **Calder Greenwood and "Wild Life"** to celebrate the navigability of the Los Angeles River



Friends
of
the
LOS ANGELES
River

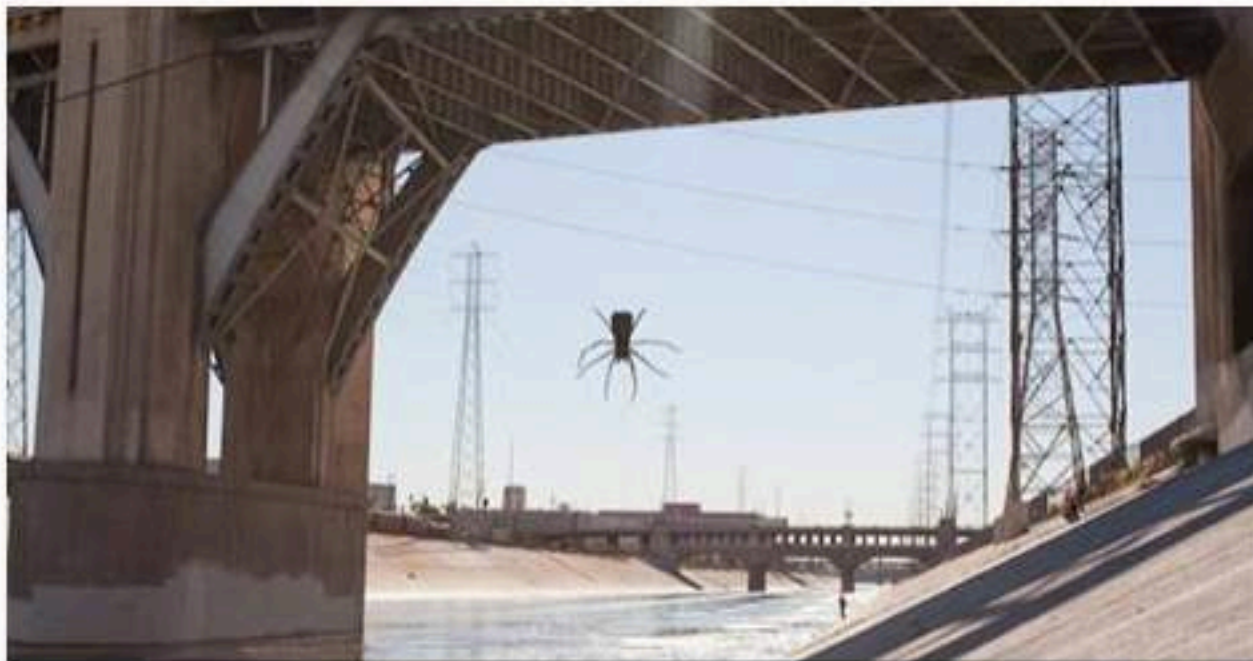
Guerrilla installers Calder Greenwood and "Wild Life" to celebrate the cobwebs of the dying 6th Street Bridge



Mayor Eric Garcetti

February 2 at 9:49am · Los Angeles, CA · 🌐

Good to see LA artists are keeping up their mischievous ways.



Giant Spider Terrorizing The Sixth Street Bridge

The spider is hanging menacingly from the Sixth Street Bridge.

LAIST.COM

Like · Comment · Share · 👍 632 💬 28 ➦ 76

**Friends
of
the
LOS ANGELES
River**

The New York Times



LOS ANGELES — On a recent Monday morning, Lewis MacAdams, a 65-year-old poet, was standing on the roof of a sheriff's department garage on the edge of downtown.

LINKEDIN

**Friends
of the
LOS ANGELES
River**

www.folar.org

Piggyback Yard is twice as big as Taylor Yard & Cornfields Combined





**Friends
of
the
LOS ANGELES
River**

Taking it a step further

